



Science Park University of Antwerp

Building business on science



Science Park
University of Antwerp



The province
of Antwerp



COLOPHON

Official publisher

POM Antwerpen
Koningin Elisabethlei 22
2018 Antwerpen
T. +32 3 240 68 00
E. info@pomantwerpen.be
W. www.pomantwerpen.be
W. www.wetenschapsparkantwerpen.be

Graphic design

Toast Confituur

Photos

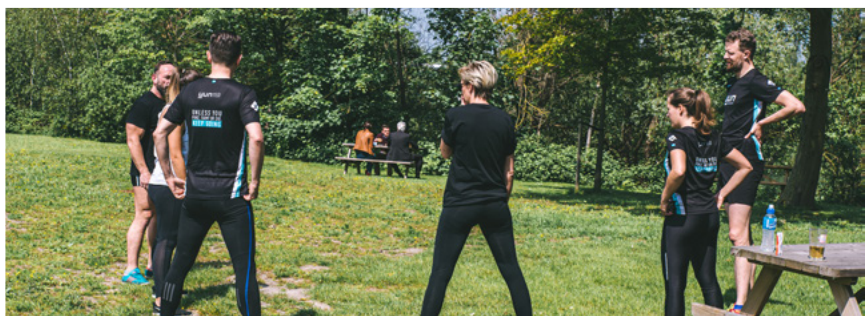
© POM Antwerpen
©Lawrence Schoonbroodt
©Robbie Depuyt
unless otherwise indicated

Copyright

No part of this publication may be reproduced without prior written permission from POM Antwerp – Science Park University of Antwerp. All rights reserved.

Disclaimer

The information in this publication is intended for informative purposes. The Development Authority of the Province of Antwerp (POM Antwerp) and its partners cannot be held liable for any damage arising from the use of information in this publication.



Contents

1

Assets

4

2

Network

8

3

Infrastructure

18

4

Event Location

34



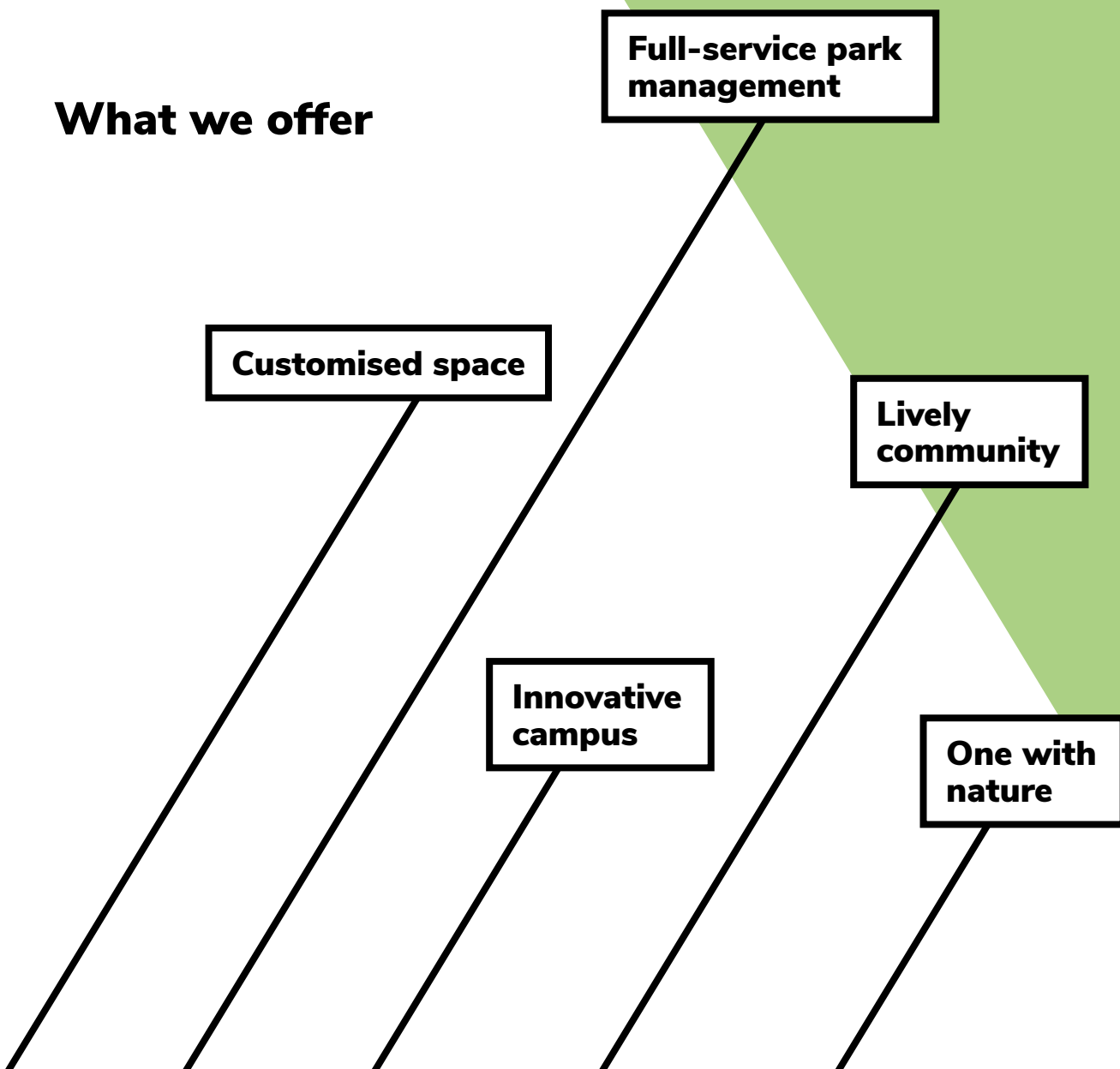
Assets

Science Park University of Antwerp

The ideal location for innovative, research-driven companies in the health and environmental sector. Anyone can turn to us, from start-up to multinational.

Every day we work to ensure that your company can grow quickly and successfully. In short, we provide an environment that will bring out the best in you and your team.

What we offer



Our experts are at your service

The Science Park University of Antwerp is an initiative of the Development Authority of the Province of Antwerp (POM Antwerp). Do you have questions about real estate or park management? Companies on campus are welcome to contact POM Antwerp for assistance.



Luc Broos
general manager



Geert Penneman
business infrastructure



Jade Verrept
community & clusters



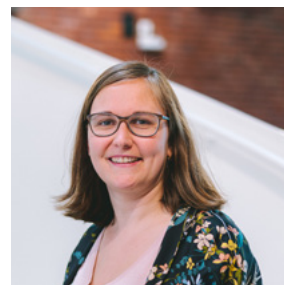
Erik Lejeune
facility & park management



Katrien Offeciers
reception & events



Frank Vaes
mobility



Jill Van Hoydonck
communication & events

At the Science Park you can also turn to our team with questions, challenges or obstacles. We are there for you with first-line advice and open up our network to you. We also regularly organise relevant information sessions tailored to starters and growers.

1



Focus on your core business

As an entrepreneur, you want to focus on your company, product, customers and people. The team at the Science Park University of Antwerp is therefore happy to take over some of your practical concerns. When it comes to your workplace, we provide made-to-measure solutions. Moreover, we allow that workplace to grow along with your company. As developer and manager of the park, POM Antwerp has extensive expertise in the field of park and real estate management.

2



Excel in what you do

The search for funding, the best experts or the right partners takes time. But once you find them, it gives your company a tremendous boost. Thanks to the business development team at the Science Park, you have to invest less time in this. We are there for you with advice on HR, legal issues, IP and funding. You can also make use of our extensive network. Thanks to our collaboration with the Flanders Innovation & Entrepreneurship (VLAIO) and Flanders Investment & Trade (FIT), you can more easily find your way around the subsidy landscape and explore other markets. In addition, at the Science Park, unique, internationally oriented clusters arise in domains such as respiratory innovation (eu.reca) and cell and gene therapy & tissue engineering (at.las). You can actively participate in innovation in that regard.

3



An optimal setting for relaxation

If you want to focus for 100%, you will occasionally need a bit of relaxation. The Science Park borders the Walenhoek nature reserve. Those 60 hectares of greenery give you the opportunity to jog or cycle during your lunch break. Coffee Bar Harriet is a dynamic meeting place for you and your customers. You will also bump into colleagues from other companies at the Science Park. And of course, you will enjoy the finest coffee.

4



Attract new talent

Research and IT profiles are scarce and sought-after. This means that it is not always easy to attract new employees. As a start- or scale-up, it can be a real challenge to compete with the big-league players. So it's an advantage to emphasise the benefits of this workplace. The opportunity to work at a modern, green campus in a dynamic environment: a real selling-point.



Network

Entrepreneurship takes a community.



Lively community

At the Science Park we like to give companies the opportunity to get to know each other better. Inspiring lectures, informal happy hours, and open coffee gatherings are ideal for this. At no obligation whatsoever. Always a success.



Innovative clusters

Innovation happens when people draw upon their own expertise to find a solution. This certainly applies within healthcare, where new therapies can only succeed when doctors,

entrepreneurs, researchers, patients and government join forces. Discover eu.reca and at.las, unique clusters with the aim of accelerating innovation.



Sublime relaxation

Relaxing over a cup of coffee, a walk in the green setting, or a bit of physical exertion in order to get back to work with a fresh mind, all this contributes to your productivity and happiness at work. The Science Park is a unique environment, where you will work, not because you have to, but want to work.



Academic expertise

Collaboration between entrepreneurs and academics often leads to new, interesting insights. Universities, colleges and other research centres therefore have quite a lot to offer. We can help you to make the right connections.



Smart network

The team behind the Science Park has an extensive network of specialists and experts. This includes both people with whom we work constructively ourselves and companies recommended by our customers. We are happy to open up this network to you.



Spotlight: anicells

A word from
Nathalie Cools, CEO anicells

“anicells supports cell therapy developers in delivering their product to patients. To this end, we offer GMP cleanrooms where our qualified staff can work on behalf of the customer.

Expanding this kind of GMP accelerator is very challenging. The investment in setting up and equipping such labs is enormous. As a start-up, we therefore needed the necessary legal guidance to deal intelligently with potential investors. We have found this expertise in the Science Park network; a legal expert who works constantly with innovative companies and who was able to properly assess our challenges. That represents a tremendous added value.”

10

NETWORK



Spotlight: BioNotus

A word from
Johan Van Daele, CEO BioNotus

“BioNotus is a CRO specialised in rapid bioanalyses of medicines. In the process, we take into account diverse parameters and the specific requirements of the customer.

We stand for a client oriented & custom approach.

We convert the results of our analyses into dosing schedules for normal and special populations. We are a fast-growing company that handles the wide range of projects with a fairly compact, multidisciplinary, yet specialised team. This means that we have to use our time wisely and only want to focus on contacts and conversations that offer a clear return. The certainty that you will be instantly connected with the right advisor via the Science Park saves you a lot of unnecessary loss of time.”





Introducing our innovation clusters: eu.reca and at.las

Through the Science Park, we want to provide maximum support to the growth of clusters. Clusters are valuable networks within which companies, researchers and other stakeholders such as, for example, government, training providers or – when the focus is on issues in healthcare – doctors and patient groups, share experiences and knowhow in order to come up with better solutions and accelerate innovations.

A well-functioning cluster offers many benefits to all stakeholders involved. Through the network, you can coach start-ups and scale-ups, you can connect companies to research organisations, facilitate co-creation processes, develop specific training courses or set up specialised infrastructure,... the possibilities are enormous, just like the added value this can represent for you. As operator of the Science Park, we already had a lot of experience in managing shared services and facilities. So the step towards helping to set up clusters was not much of a leap for us.



A word from
Jade Verrept, community & clusters

► **We currently support two networks, eu.reca and at.las. The dynamic they bring to the park is very valuable. We are therefore open to exploring the feasibility of new clusters.**

eu.reca – European Respiratory Cluster Antwerp

eu.reca is a knowledge platform that focuses on the human lung and the fight against lung diseases. The respiratory sector is in full development; there is an increasing prevalence of lung problems, but also an enormous drive to put new treatments on the market.

As a catalyst for innovation, eu.reca connects promising start-ups with investors, pharmaceutical companies with product designers, academics with entrepreneurs. The premise is that we can facilitate the development of new technologies and therapies through interaction. Today eu.reca mainly focuses on topics such as air quality, asthma, composition of new medications and smart devices.

Find out all about this ecosystem at:
www.eureca.world.





at.las – Leveraging Affordable Solutions for Advanced Therapies

at.las is an ecosystem for companies active in advanced therapies. The initiative was driven by and primarily intended for researcher-entrepreneurs who want to bring their therapy to the patient. Because the challenges in cell therapy, gene therapy and tissue engineering are huge, at.las is committed to sharing experiences, spreading know-how and connecting the right people.

Are you a researcher looking for advice, GMP research infrastructure, or financial resources? As a service provider, do you want to share your expertise with researchers? Do you want to stay informed about what is going on in the fascinating world of ATMP?

Read all about it at:
www.advancedtherapies.world.





Spotlight: Oriento SA

A word from
Stefano Console, CEO Oriento

“Oriento SA is a consultancy active in the pharmaceutical industry, more specifically in the respiratory sector. Inhalation therapies are among the most challenging to develop because they require a highly multidisciplinary approach.

In addition to working out a well-functioning active ingredient, you need to pay attention to the formulation of your medicine, to the device – think, for example, of a puffer or aerosol – to the follow-through of your patient and many, many other things. The unique thing about an ecosystem like eu.reca is the strong focus on the respiratory field and the opportunities you get to make valuable contacts and gather expertise on all relevant aspects of the development of a respiratory treatment. This has enormous added value for us, because we can easily test projects with all stakeholders: from producers of raw materials to doctors, from product developers to manufacturers. Also a plus is that eu.reca is very committed to continuous learning. The confrontation with new insights keeps you sharp as an entrepreneur.”



Spotlight: Inovigate

A word from
Ingrid Maes, Managing Director Inovigate

“When it comes to research and development, Belgium offers many advantages: a dense network of hospitals and academic research centres, proven procedures for the application, authorisation and organisation process for clinical trials, many spin-offs and pharmaceutical companies, ultra-specialised service providers, etc. All the players are there, as well as the individual expertise, but the challenge is bringing them together; that is essential for developing an ATMP product and rapidly making it available to the patient. Nowadays, an academic researcher with a promising idea rarely knows which specialists to turn to for its further development and industrialisation.

That is why it is crucial to focus on an ecosystem for ATMPs, a ‘one-stop shop’ connecting the different players with one another. As a consultancy agency specialised healthcare and with a passion for ATMP, we are committed to being a part of this.”



Innovate – in collaboration with a knowledge institution

You will find numerous knowledge institutions and centres of expertise in Flanders. In addition, eco-systems are being created in many places that bring together know-how around niche topics. As a company, it is not always easy to find the right research group, let alone the perfect contact person. Through the Science Park, we can also lend a helping hand there.

Naturally, we are highly familiar with the University of Antwerp and the colleges that belong to the AUHA, the Antwerp association of universities and colleges. Our contacts within the Valorisation Office are happy to help you. Many UAntwerp research groups participate in collaboration with companies conducting research in IOF consortia. These are specific collaborative platforms for academic and industrial research, funded by the Industrial Research Fund (IOF). Researching innovative technologies can be a very expensive and time-consuming process. Thanks to a collaboration with UAntwerp you can focus on expanding your core business while the university lab takes care of the (academic) research. In addition, the university and colleges have robust and unique research infrastructure such as powerful computers, microscopes and all kinds of databases.

We also have good contacts within the Antwerp University Hospital (UZA). Would you like to cooperate with the BioBank of UZA, set up a clinical trial or are you looking for feedback from specialists, doctors, general practitioners or patients about a product or service, then we can also help you find your way.

More information about the Valorisation Office: uantwerpen.be/forcompanies

Contact: Valorisation Office – Campus Middelheim
+32 (0) 3 265 30 25
valorisatie@uantwerpen.be



Find out more about the IOF consortia at the University of Antwerp, the available equipment and the forms of collaboration?
Via darwin@wetenschapsparkuantwerpen.be you can request the free brochure 'Collaboration with a Knowledge Institute'.



16

NETWORK

Sublime relaxation

A walk in our green setting, relaxing with a cup of coffee, a bit of physical exercise in order to get back to work with a fresh mind, all this contributes to your productivity and happiness at work.

The Science Park is a unique environment where you work not because you have to, but because you want to. Relaxation: less stress, better performance. People who are happy at work are often more productive, less likely to get sick and better able to work together with others. The Science Park is therefore fully committed to providing opportunities for relaxation.

Enjoy the green setting

If you want to clear your head, take a walk in a green landscape. Explore the park, along the bodies of water, and recharge your batteries. Did you know that spending 20 minutes in a forest or park significantly reduces your stress hormones? In addition, exercise releases dopamine, which makes you happier and more creative.

In good weather you can have lunch in one of the many picnic areas in the park or on the terrace of our house bar Harriet. Incidentally, a meeting in green is not only more pleasant, it is often more efficient.

Do you have a competitive streak? Then take part in our annual outdoor table tennis and table football tournament.



In the pipeline

In the next building (currently under construction) we will provide space for a fitness centre where health, both mental and physical, are central. If desired, you can call on the support of a personal coach who will create a programme tailor-made to your needs and schedule or you can take one of the many group lessons. A well-deserved healthy refreshment is waiting for you after your workout.

Discover our lively community

At the Science Park you work in a dynamic environment among fellow entrepreneurs. Learning from each other's experiences, using each other's network, this can help you tremendously as an entrepreneur. But then you have to get to know each other first. If you want to chat with one of the other companies, you can easily do so at our events or casual happenings. On average, we organise about twenty events per year, from networking drinks to lectures and training sessions.

Bar Harriet – take a break with a great cup of coffee

Named after Harriet, one of Charles Darwin's pet tortoises, our coffee bar is the perfect place to unwind. You can enjoy invigorating coffee, delicious tea and an assortment of Fritz soft drinks, while reading the newspaper or a magazine.

Would you rather have a chat with the barista or a fellow entrepreneur? That is of course also possible! From our terrace you have a beautiful view of the water; the perfect place to clear your head.

You can also get a small bite to eat in the bar. A croissant for breakfast? Fresh soup or a grilled sandwich in the afternoon? All possible. And at regular intervals, team Darwin gets cooking and you can enjoy a bagel or pasta at a 'Foodie'. Our house bar also provides catering for your event, seminar or meeting with a smile.

In the pipeline

In the next building (currently under construction) we will provide space for a restaurant, where you can have lunch with colleagues, but where you can also schedule a quiet business meeting with customers. A quick bite, a healthy lunch or a full meal, it's all on the menu. Whether you come in early in the morning or have worked later in the evening... our restaurant is always open to you.



Would you like to attend one of our events?

Subscribe to our newsletter via the website or follow our Facebook page: fb.me/coffeebarharriet



Infrastructure



N15: get started

Welcome to the beating heart of the Science Park. Incubator DARWIN, with its open architecture, is a unique building, where you will find laboratories, offices and modern meeting infrastructure, but also the cosy Bar Harriet.

Reception Staff Darwin and Coffee Bar Harriet



Julie Joossen



Evi Quintelier



Katrien Offeciers

A dedicated team who's always ready with a smile to help not only the starters at incubator Darwin but also all the companies throughout the park.



Flexible contracts and little red tape make start-ups feel right at home. If you need it, we can surround you with the right experts from the start. Our friendly and efficient secretariat receives your customers, answers your phone and provides a nice cup of coffee.

At incubator Darwin, you are choosing for a dynamic community where everything revolves around knowledge, networking and learning from each other. Your fellow entrepreneurs are working just like you on new products or innovative services. This focus on innovation and science means that the companies that are based here can also learn from each other's know-how. Moreover, the open atmosphere, the attractive building and the unique working environment are a strong asset in attracting new employees.

Interested? Would you like to learn why incubator DARWIN is something for you? Contact us via darwin@wetenschapsparkuantwerpen.be

- Darwin stands for choosing a professional start, a dynamic community and an attractive workplace side by side with fellow entrepreneurs.

ID INCUBATOR DARWIN

DARWIN

Open architecture

1500m² office and lab space

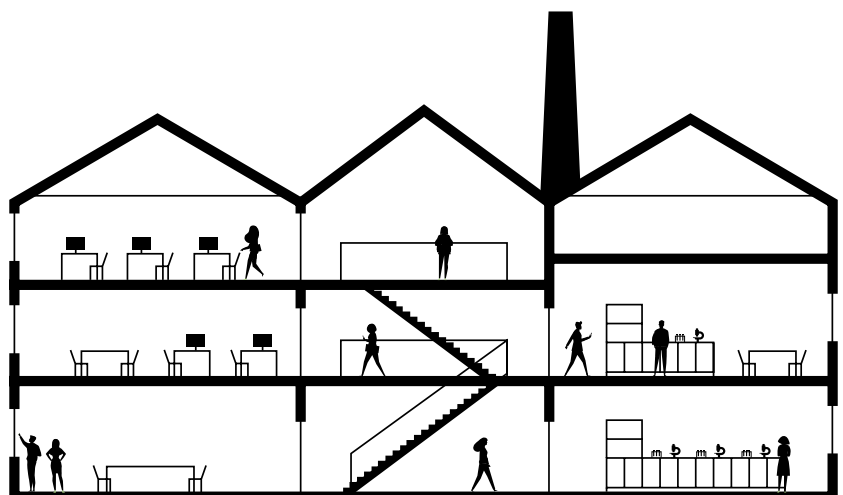
Attractive coffee bar, summer terrace and lunch corner

Light, spacious auditorium

Conference rooms, lounge corners and boardroom

Reception, telephone answering service and mail processing

Full-service facility management



Spotlight: Innovative Automotive Services (IAS)

A word from

Mohamed Amrani, co-founder & CIO Innovative Automotive Services (IAS)



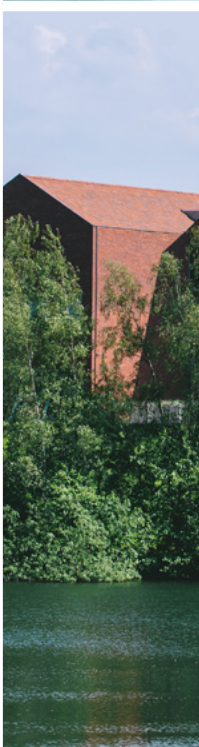
Innovative Automotive Services (IAS) is the company founded by Mohamed Amrani and Alexander Swannet. Since 2012, they have been developing innovative learning concepts with impressive results, Europe-wide. One of their showpieces is MOBILAR®, a tool and methodology for optimising the returns on training programmes.

“MOBILAR® stands for ‘mobile’ and ‘modular’. We use tools such as big data to determine training needs. Designed according to a modular structure, our learning methodology is specifically geared towards the individual as well as the workplace. What’s more, we believe that a learning plan should be constantly in motion, or in other words, mobile. We are still very much in the development phase and we are doing this in co-creation with a range of specialists and knowledge institutions. However, our methodology has already become sufficiently robust and we were recently asked to implement it at the European level for a world-class player in the automotive sector. But we are developing our tool in such a way that it can easily be deployed in other sectors.

Aside from MOBILAR®, we push ourselves to constantly dare to diverge from the conventional approach to training. For example, we recently developed a concept for ‘Studio Based Training’: a methodology that can be applied quickly, and with which we have stimulated our customers to take a different view, in the future, of how they train their employees or commercially trigger their customers. Concretely, this involved setting up a film studio in Niel as proof of concept.

► We like a warm, no-nonsense approach. Having a drink with our visitors at the bar is therefore an absolute must.

Perhaps we are a little bit different from the others, since our core business activities do not have such a strong link with Health and Environment, the focus of the Science Park. But because of our innovative character and our collaboration with universities and colleges, we were also welcome here. We are delighted that we can be based in this innovative ecosystem (and beautiful green setting). The atmosphere of the building and the bar is important for us. As a developer of training concepts, we want our customers and trainees to feel welcome. We like a warm, no-nonsense approach. Having a drink with our visitors at the bar is therefore an absolute must. The Darwin Team takes such good care of us that our customers often ask us if they can come back to Niel again. That’s convenient!”





Spotlight: iFLUX

A word from
Goedele Verreydt, co-founder iFLUX

iFLUX was founded in 2017 as a spin-off from the Flemish Institute for Technological Research (VITO) and the University of Antwerp. The young company developed a patented technology that makes it possible to measure the spread of soil contamination.

“With our iFLUX sampler, we simultaneously measure the flow rate of the groundwater and the spread rate of the contamination.

What is innovative about our technology is that we directly map the speed and direction of pollution in groundwater. This provides more accurate risk analyses than if only concentrations are looked at. In October 2017, we won the Nicole Innovation Award with our technology. We are constantly committed to further development, in the field of digitisation, for example.

As a spin-off from UAntwerp, among other institutions, the Science Park was an obvious location for us. It was difficult to predict exactly when we would start our company and therefore involve the lab in Darwin. It was great that the incubator Darwin was able to offer us flexibility at the time.

As an environmental scientist, I like to be surrounded by nature. I love that I can walk in the nature reserve during the lunch break. The fact that we can use the boardroom and the auditorium is also an added value. This immediately gives a positive impression to customers, but also to investors.”

► As an environmental scientist, I like to be surrounded by nature. I love that I can walk here in the nature reserve during the lunch break.

Ready to grow further?

Is your company ready for the next step? Then you need a customised business space. As the owner, developer and manager of the Science Park, the Development Authority of the Province of Antwerp (POM Antwerp) is the perfect partner to focus on your needs and translate them into concrete solutions. Offices, labs, cleanrooms, storage areas: you name it and you will find it on the Science Park.



Curious to see our campus?

Schedule a location visit and discover what we have to offer you. Mail us: darwin@wetenschapsparkuantwerpen.be



A word from
Luc Broos, general manager POM Antwerp

POM Antwerp is constantly investing in new infrastructure at the park, independently or in collaboration with partners. The campus is therefore in the process of expansion and offers a wide range of solutions to growing companies in need of space.

► I strongly believe in the ability of start-ups and growers to innovate, modernize and take risks. I also believe that we should do everything we can to ensure that entrepreneurs can do business in the first place and not have to worry about secondary issues.

That is why POM Antwerp is a flexible partner who proactively thinks along and always strives for the best solution in terms of space requirements. A company can first join us as a co-worker, grow in the incubator Darwin, grow even further in one of our other buildings and eventually even choose their own location.

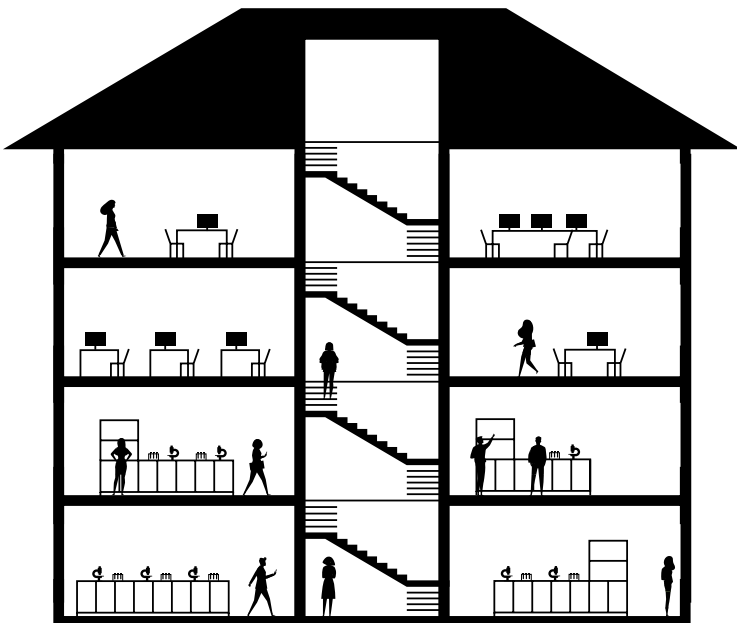
As a catalyst, we want to help strengthen the dynamics of companies by facilitating their growth. To me, that is our core task.





N18: development

On the campus POM Antwerp manages its own development building. Situated on one of the embankments, from the building you have a spectacular view of the adjacent nature reserve. Here, you can rent flexible office space (from 250m²) that can be converted into labs.



ID Development building

N18

3500m² office and lab space.

Common groundskeeping, sanitary facilities and waste removal.

Discounted access to the facilities and events at incubator Darwin.



Spotlight: BioOrg



A word from
Koen De Koster,
founder and CEO of BioOrg

More than ten years ago, Koen De Koster and Filip Willocx began their search for an innovative way to combat visible pollution, but also fine particles and volatile organic compounds in the air indoors.

In 2009, BioOrg launched its first product. This technology is protected by various International patents. Companies such as Colruyt and KBC, as well as the Flemish government are customers, as is our incubator Darwin at the Science Park. The company currently has 7 employees.

BioOrg saw a large increase in the number of applications for the biological nebulization of offices during the COVID-19 period. “In addition to measures required by the government for disinfecting contact surfaces, BioOrg provides air purification and extra hygiene by applying an ecosystem of good bacteria”, says Koen De Koster, CEO BioOrg.

“BioOrg is delighted that the Science Park is now strongly committed to the synergy between work and relaxation in the midst of nature. POM Antwerp has created a green environment here, both inside the buildings and outside by constructing a flower meadow, water basins, walking paths,... The eu.reca initiative also focuses on topics that are very close to our hearts, such as the recent workstream on air quality, for example. Taking all these benefits into account, it is easy to see why we are excited to be able to let our business continue to grow and thrive at this Science Park. And we are growing a lot.”

N21: development

At the back of the park you'll find the brand-new hybrid industrial hall. This hall comprises 5 modules of various sizes. Here, you can combine administrative activities with production, storage or lab activities.

28

INFRASTRUCTURE



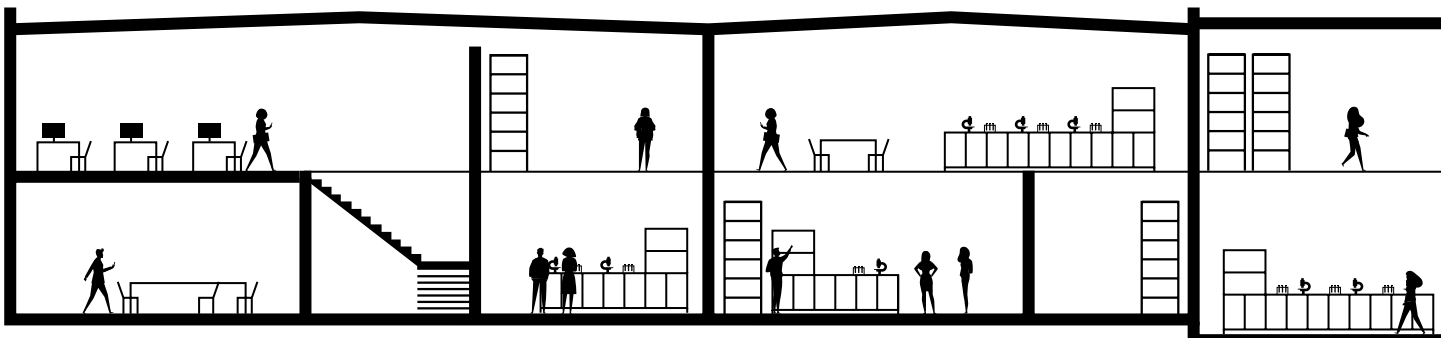
ID Hybrid industrial hall

N21

Hybrid industrial hall suitable for box-in-box labs, production and storage.

Units range in surface area from 150 to 450 m² and are available in diverse levels of finishing.

Opportunity to rent, lease or buy.





Spotlight: eTheRNA immunotherapies

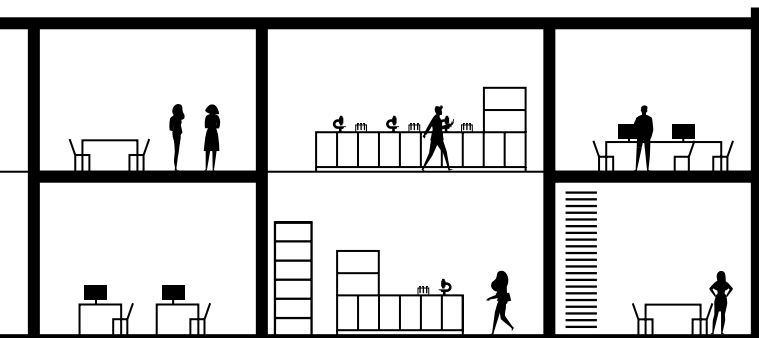
A word from
Dirk Van Broekhoven,
operational lead & general
counsel eTheRNA
immunotherapies



Since 2013, biotech company eTheRNA immunotherapies has been engaged in research and development in the field of mRNA, which is involved in the transcription of our DNA into proteins. The goal is to develop a new way to fight cancer.

“Today, we combat cancer with a mix of radiation, chemotherapy, immunotherapy and surgery. Our immunotherapy consists of loading the dendritic cells with specific mRNA. Through our technology, the mRNA is activated to fight the cancer.

After we outgrew the VUB, we were able to set up here at the Science Park and that suits us nicely. The park is well located and easily accessible from all directions. The Science Park team creates a unique atmosphere. Networking with the other companies is facilitated and there are interesting lectures and training courses. The presence of other industry companies such as anicells is very interesting to us. The at.las ecosystem around advanced therapies also looks promising. This is how an interesting microcosm gets created here, and we like that.”



► An interesting microcosm gets created here and we like that.

Sustainable park management

Every company has its own focus, approach and identity. But companies also have common needs and requirements. Such as a clean, safe and well organised business environment, for example. POM Antwerp tracks these collective needs and works actively to meet them.

In this way, the Science Park focuses on three important pillars: safety, sustainability and accessibility. Since 2019, the Science Park has had a point of contact for facility and park management, Erik Lejeune. Erik continuously improves the quality in these three key areas in collaboration with public and private parties. He is the central point of contact for tenants and owners, but also maintains intensive contact with municipalities and other agencies. In consultation with the companies on-site, he organises the maintenance and monitors its quality. He also provides clear signage and explores possibilities for group purchases.



A word from
Erik Lejeune,
facility and park management

► I want to give park management a face that is visible and approachable. Responding quickly and effectively promotes the relationship with the tenants of the Science Park. That is why I also chose to locate my office in our development building Archimedes.



A word from
Frank Vaes, mobility

► As a developer, we want to guide people and their companies in everything they do by offering a high-quality working environment and a wide range of different modes of transport. Striving together to intelligently manage energy and environmental aspects in a setting with high-quality facilities and attention to everyone's well-being, that is my mission.

In the pipeline

At the Science Park, POM Antwerp focuses on providing charging infrastructure, shared cars and shared bicycles. In addition, a study is being conducted on the possibilities of generating and distributing energy in a sustainable manner. This falls under the duties of our contact point for mobility: Frank Vaes.

The future looks bright

The Science Park continues to evolve. POM Antwerp is working hard on the creation of additional business space. This is done with a well-thought-out view of smart use of space, sustainable building and the balance between nature and work. The site is adjacent to the Walenhoek nature area, a green lung in the Rupel region. POM Antwerp absolutely wants to safeguard that unique character.

POM Antwerp bases its further development on a master plan that allows flexible responses to market demands, without detracting from the image of the campus. It is a historic site where clay pits were formerly dug for the brick industry.

That industrial past is still subtly visible in many ways: in an old crane construction in one of the water features, in segments of a former railway network, in the architecture of the buildings, ...

Today the campus wants to offer scientists and entrepreneurs the opportunity to build a future in this inspiring environment. About a quarter of the campus has been realised in the meantime; plans for further development are ready. The balance between work and greenery is paramount. The majority of the building volume is cleverly clustered north of the Galileilaan. This gives the valuable nature on the slopes free rein. Basins between the buildings collect rainwater and provide structure in the park. Moreover, they create distance between the buildings, with less view and more privacy as a result. On an R&D campus that is not unimportant.



A word from
Geert Penneman, Business Infrastructure

► In the next few years, the Development Authority of the Province of Antwerp (POM Antwerp) will be working on the development of a minimum of 1000 m² additional surface area. This space is much needed to accommodate the spectacular growth of the companies at the Science Park as well as to attract new entrepreneurs. Our plans therefore include building offices, labs and a logistics demonstration centre.





Spotlight: YUN

A word from
Tom Verlinden, CEO and founder of YUN

Tom Verlinden and his team launched the YUN probiotherapy range five years ago. These skincare products offer a solution for common skin conditions and personal care. This scientific breakthrough was made at the Science Park. 'YUN' – pronounced 'yoon' – is a Chinese word that can mean both 'bacteria' and 'army'. YUN refers to an 'army of good bacteria defending your skin'.

32

INFRASTRUCTURE

“We worked with pharmacists and bio-engineers to develop our products. I myself am also a pharmacist. After ten years at the Qualiphar family business, the time had come for my own project. At YUN, we develop creams and sprays based on good, living bacteria that restore the skin flora. To this day, acne is combated with antibiotics. But growing resistance to antibiotics is a major concern, according to the World Health Organization. It is more dangerous than we think. If bacteria become resistant to antibiotics, even surgery is no longer possible. Another advantage is that there are no side effects.

We were one of the first companies to start at Darwin. We find this a pleasant working environment. Every day you feel that great, innovative vibe in the air here. We are growing so fast that we will soon leave the incubator behind and hope to continue growing at the park. The Provincial Development Agency POM Antwerp has proved to be a real partner for this and that is unique. It is very important to us that we should not be worrying about concrete, but that we can fully focus on the further development of our products.”

► Every day, you feel that great, innovative vibe in the air here.





Spotlight: VIL

A word from
Liebeth Geysels, CEO VIL

VIL is a member association for the logistics sector in Flanders and is headed by lawyer Liesbeth Geysels. In 2021 the unique experience centre Log!Ville will open its doors at the Science Park.

“VIL was established in 2003 because the logistics sector is one of the strategic sectors for Flanders, due to our central location in Europe. The key is to detect the needs and trends within the sector.

What do we do? We look for new ways to work in an innovative way and bring our members together to join forces financially to support an approach that we think deserves further research. This is how we realised that people in logistics have a hard job, lifting a lot, bending a lot, carrying a lot. In the medical world today, you have ‘exo-skeletons’, these are suits that support people who are in rehabilitation, for example, with walking. We thought that such a suit could also help our people, so we started a research project to investigate how we could support shoulders, upper arms and knees with a harness of this type. For such a project, part of the cost is subsidised by the government and the rest comes from companies that need this kind of solution. It may happen that a certain research project does not fully deliver the desired result. Even then, there is still profit, because through the process our members got to know each other better and perhaps learned something that already benefited them in some way. We do an average of 8 innovation projects per year.

In March 2021 we will open a unique logistics experience centre at the Science Park, Log!Ville, where we want to show companies and students from the logistics sector the most innovative solutions of the moment. After a thorough SWOT analysis, this site, located centrally in Flanders, emerged as the best. The green character, the strong focus on innovation and the support that POM Antwerp could offer in writing a European subsidy application, were all decisive arguments for us. It will be a building of 3000 m², designed by Met Zicht op Zee architects. I call it a kind of Technopolis for logistics. All that there will be to do and to see is not definitive at the moment, but we are hard at work on it.”



Event location

Conference and seminar-facilities: impress your customers and guests

You can also come to the Science Park for your courses, networking events or board meetings. Enjoy the inspiring environment, discover our spacious parking, take a break in the bright foyer with cosy coffee bar, in short: make every professional event a success. An experienced team will help you work out your event and guarantee that everything goes smoothly.



A word from
Jill Van Hoydonck,
events & communication

► In recent years we have organized more than 60 events at the Science Park, ranging from international symposia, 'Science Day', to board meetings or training. We respond quickly to all circumstances and always have a plan B at hand so that as a customer, you can focus on your guests. Parallel to the development of the park, we will also continue to work on creating additional classrooms and meeting facilities so that our range will be fully tailored to the needs of our companies.

In the pipeline

In the next building (currently under construction) we will provide additional conference and training facilities in various sizes and arrangements. In this way, our range will be even better suited to customer demand.

35

EVENT LOCATION

Would you like to find out more about the possibilities or receive a customised proposal?

Let us know via
+32 (0)3 443 04 00 or events@wetenschapsparkuantwerpen.be

Spotlight: Pharmacometrics Network BeNeLux

A word from
Pieter Colin,
member steering committee,
Pharmacometrics Network BeNeLux

We are always looking for new locations within the BeNeLux region for our 6-monthly scientific symposium. Incubator Darwin turned out to be ideal for organising our event. An excellently equipped auditorium, an attractive, beautifully arranged lunch/coffee area and a

customised catering range mean that we will certainly choose this location again in the future. The help with receiving the participants and creating and handing out the badges was much appreciated.

Boardroom Toxodon

If you want to impress, organise your meeting in our boardroom Toxodon. A beautiful, panoramic view of the water feature in the background immediately provides an excellent first impression. The bright space, the beautiful interior and the range of drinks and refreshments from the Bar Harriet guarantee a successful meeting.



Auditorium Beagle

Beagle is a fully equipped auditorium with a breathtaking view of greenery and water. This room is therefore ideal for training, presentations, lectures or press presentations. In combination with the foyer, this room also lends itself to networking events or symposia.



Foyer

Our light, spacious foyer is a pleasant place to spend time. Networking receptions - whether or not following a conference or seminar - are possible. You can also combine it with our Coffee Bar Harriet for a refreshing break or offer your guests a nice cup of coffee or tea. In good weather you can enjoy your lunch on our terrace with a view of a water garden. You also have the choice to let us take care of every aspect. We are happy to take over the reception, registration and catering. If you prefer to stay in control and if you want to work with a caterer of your choice, we will explore the possibilities together with you. Interested? We will gladly provide you with a customised proposal.





ID BOARDROOM TOXODON

Meetings, workshops, break-out sessions

16 person capacity

Panoramic view / abundant natural light

Wifi / screen / beamer / whiteboard



ID AUDITORIUM BEAGLE

Training sessions, presentations, lectures or press events

72 person capacity

Lectern and option for panel presentation

PA system

Wifi / screen / beamer / whiteboard

Room can be darkened



ID FOYER

Networking receptions, welcoming guests, informal meetings

120 person capacity

6 modern standing tables

12 modern white barstools

Wifi

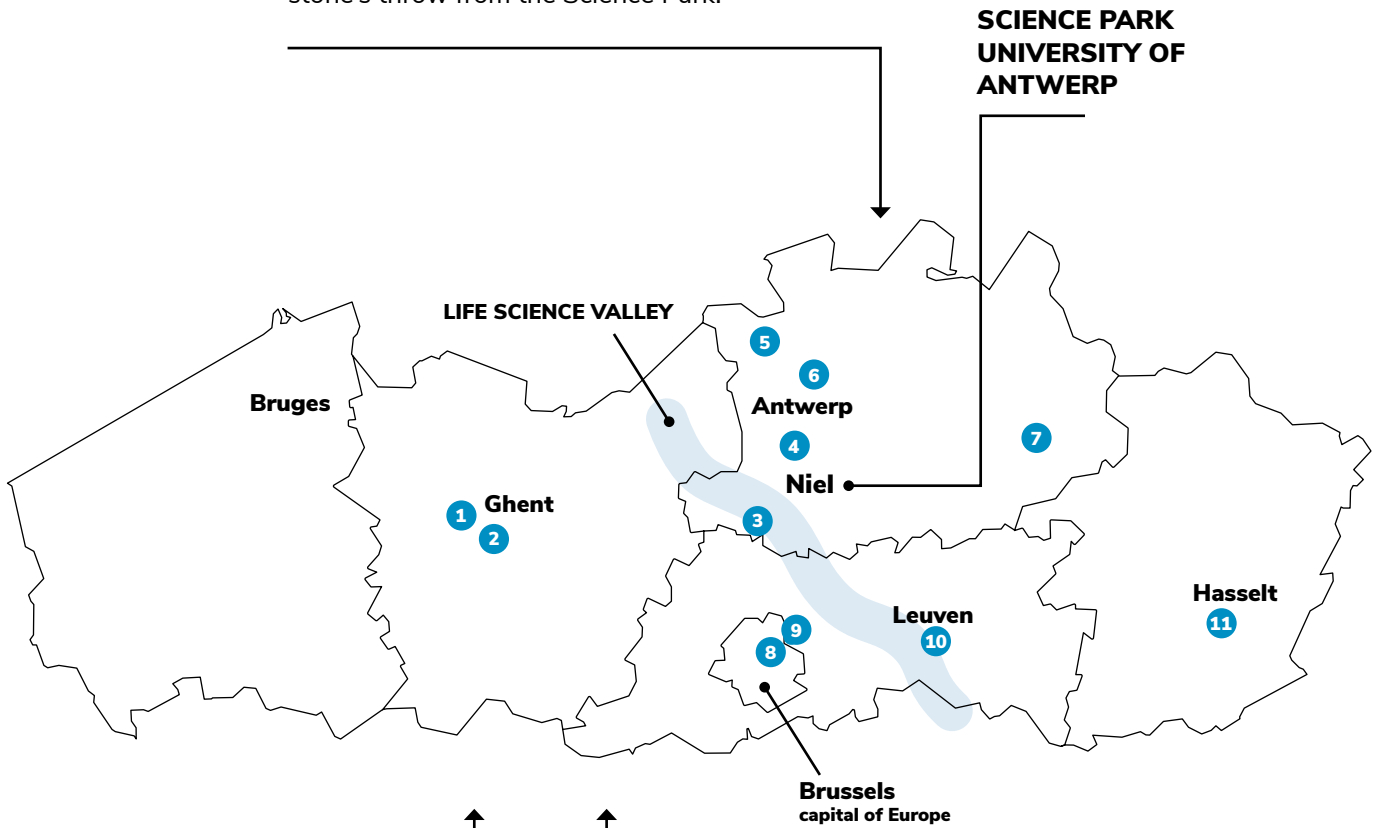
Opportunity to use the terrace with view of the water and greenery



Ideal location

The province of Antwerp has many companies in the biotech sector. Players such as Pfizer, Novartis, Lonza, Galapagos or Biocartis are based just a stone's throw from the Science Park.

38
EVENT LOCATION



Economic, political and industrial decision-makers are never far away thanks to the strategic location of the Science Park. You are quickly in the capital, the port of Antwerp is in your backyard and two international airports are within easy reach.

Companies, research organisations and universities work together very well at the Science Park. From the Science Park, you have a direct line with the University of Antwerp.

- 1 flanders.bio Ghent
- 2 UGent & VIB
- 3 Pharma Valley Puurs
- 4 UZA
- 5 Port of Antwerp
- 6 Deurne Airport
- 7 VITO
- 8 VUB
- 9 Zaventem Airport
- 10 KULeuven & IMEC
- 11 UHasselt

Easily accessible

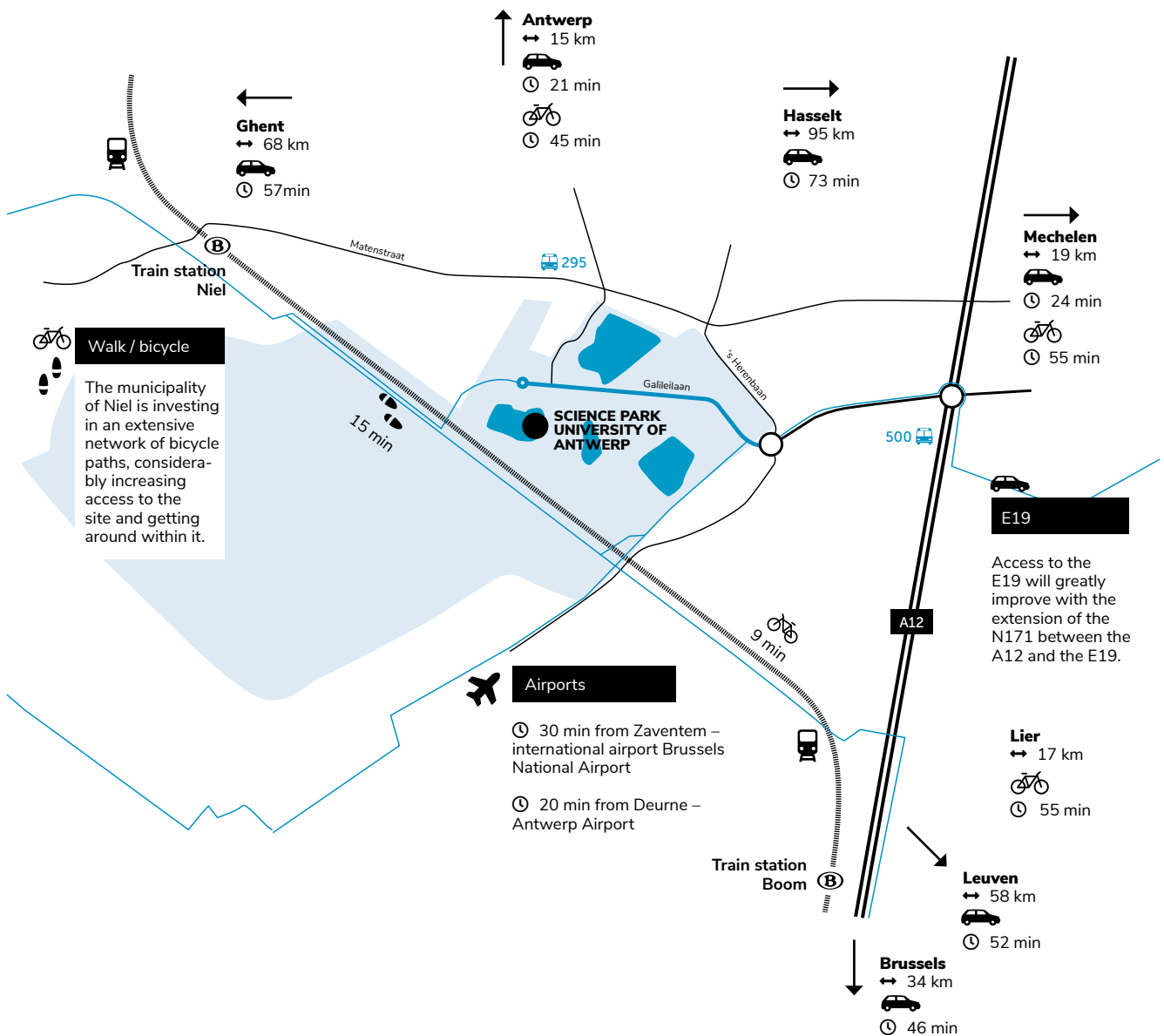
The Science Park is centrally located between Antwerp and Brussels, easily accessible and just outside the congestion-prone outskirts of those cities. The park is easy to reach by car: you are immediately on the A12 and plans are underway for connection with the E19.

You can also reach the site by public transport in no time. Just 2000 footsteps or a 15 minute walk separate you from Niel train station (2 trains per hour to Antwerp or Brussels). Busses 500 and 295 run along the A12 and stop less than 250 meters from the Science Park.

The Science Park is also easily accessible by bicycle. A network of cycling route junctions bring you close to the site.

In the pipeline

The Science Park is exploring the concept of implementing shared car, shared bicycles and shared scooters at the park. Charging stations are also being installed at the park.



Who is the Science Park?

The Science Park University of Antwerp is a partnership between the Development Authority of the Province of Antwerp (POM Antwerp) and the University of Antwerp.

POM Antwerp is the owner, manager and developer of the Science Park. With the design of sustainable business parks and stimulating strategic knowledge clusters, POM Antwerp wants to strengthen the Antwerp region economically.

More info on POM Antwerp:
www.pomantwerpen.be